

Important
message from
Battelle on pg. 3!

March 2022

the **checkup**

your pulse on preparedness

A Kansas Healthcare Coalition Publication

Healthcare Coalition Partners of KS, LLC

Company E-mail: coalitionpartners@hccpkansas.com Website: <https://www.kshcc.com>

Severe Weather Week, March 7th - 11th

This year tornados have been experienced outside the "traditional" time for tornadoes, so it may not feel like it is severe weather season, but according to the calendar, it is time. March 8th at 10:00 am. Has been identified as the target date for the Statewide Tornado Drill (please be sure to connect with your County Emergency Manager to verify the exact date and time for your community).

Reminders for tornadoes have not changed for Kansans:

- Know your area's tornado risk.
- Know the signs of a tornado.,
- Sign up for your community's warning system.
- Pay attention to weather reports.
- Identify and practice going to a safe shelter.
- Plan for your pet.
- Prepare for long-term stay at home or sheltering in place by gathering emergency supplies, cleaning supplies, food, water, medical supplies and medication.
- Stay clear of fallen power lines or broken utility lines.
- Contact your healthcare provider if you are sick and need medical attention.
- Wear appropriate gear during clean-up such as thick-soled shoes, long pants, and work gloves, use appropriate face coverings or masks if cleaning mold or other debris.

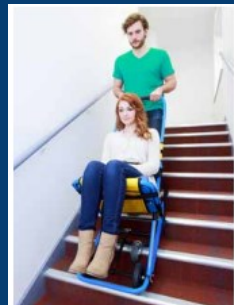
After a Tornado, take general precautions as needed:

- Continue to monitor your local radio or television stations for emergency information and the potential of additional storms.
- Be aware of possible structural, electrical, or gas-leak hazards.
- If such hazards are identified, report them to the proper local authorities/utility.
- Do not touch downed power lines or objects in contact with downed power lines.
- Wear proper clothing when walking on or near debris, including boots and gloves.
- Be careful around sharp objects, including nails and broken glass.
- Use the proper safety precautions when operating generators or power tools.
- Take steps to prevent heat illnesses and dehydration.

Kansas Animal Response Team (KART) In 2007 the Greensburg tornado revealed the need to formally address animal response in Kansas and later that year the Kansas State Animal Response Team was established. It is the federal Pets Evacuation and Transportation Standards Act (PETS) passed in 2006, that requires emergency management to address the needs of people with pets and service animals during a major disaster or emergency; the Kansas State Animal Response Team is here to help make that happen. The Kansas State Animal Response Team, a volunteer non-profit 501(c)(3) organization, teaches pet owners how to prepare for their pets, assist emergency management in pet disaster planning, train volunteers for response and responds when the team is requested through the disaster response process. Taken from the <https://kssart.org>

EvacuSleds & Transfer Devices

During annual tornado exercises is a great time to rehearse moving patients and/or residents with transfer devices (chairs, medsleds). Moving patients/residents down stairs can be challenging without such devices.



Flooding Preparations

What is the most common natural disaster in the US? If you said flooding, you are correct. Ready.gov encourages the following: **Know Your Risk for Floods** by visiting FEMA's Flood Map Service Center to know types of flood risk in your area. **Purchase Flood Insurance** or renew a flood insurance policy. Homeowner's insurance policies do not cover flooding. It typically takes up to 30 days for a policy to go into effect so the time to buy is well before a disaster. **Make a Plan** that includes your pets so that all household members know what to do, where to go and how to protect themselves from flooding. **In Case of Emergency** make sure you have important documents in a water proof container. Move valuables to higher levels, install check valves, declutter drains and consider installing a battery-operated sump pump.



Turn Around Don't Drown Each year, more deaths occur due to flooding than from any other thunderstorm related hazard. The Centers for Disease Control and Prevention report that over half of all flood-related drownings occur when a vehicle is driven into hazardous flood water. The next highest percentage of flood-related deaths is due to walking into or near flood waters. People underestimate the force and power of water. Many of the deaths occur in cars swept downstream. Many of these drownings are preventable. Never drive around the barriers blocking a flooded road. The road may have collapsed under that water. A mere 6 inches of fast-moving flood water can knock over an adult. It takes just 12 inches of rushing water to carry away most cars and just 2 feet of rushing water can carry away SUVs and trucks. It is NEVER safe to drive or walk into flood waters. Taken from www.weather.gov.



Safe Drinking Water

After many disasters, having safe drinking water is a critical concern. When planning and preparing for your personal household needs, store at least one gallon of water per person per day for several days. (Keep in mind that children, mothers that are nursing and sick people might need more water.) If helping with medical emergencies, more water will likely be needed. It is recommended that you buy commercially bottled water and store it in its original container in a cool dark place. If you need to prepare your own containers and treat water, please follow the directions on www.ready.gov/water.

Water Purification System Equipment



Is yours a facility that houses your region's water purification system? If so, then please take a few minutes this month to do the following:

- Connect with one other person in the region and review with them how to access the equipment, where it is stored, how it is operated and how to test its effectiveness.
- Follow the directions on the equipment itself to run the test. Please check for needed additional supplies and alert the Readiness & Response Coordinator if more are needed.



"The Kansas Rural Water Association is a non-profit organization that provides training and on-site technical assistance to municipal water and wastewater systems. The Association additionally provides a wide range of legislative support for cities, water districts and sewer systems."* Next time your organization has an exercise that could impact the environment, invite a Kansas Rural Water Assoc. representative to come and discuss the potential impacts a disaster could have on the water supply. This group of individuals have been planning for emergencies impacting water.

Best Practices Around Kansas



- Metro** The Metro area has learned that it is very beneficial to work across state lines to put together federal requests for hospital staffing.
- NC** One NCK hospital reached out to Bryan Health (Lincoln, NE) to secure critical care telehealth support services. This service assists local providers and staff to more readily care for critical ICU type patients not typically seen in a rural hospital. The team of critical care pulmonologists are available for consultation and daily rounding via their telehealth platform.
- NE** One NE hospital is tracking employees with COVID positive household members and looking at potential back-up staff for the employee assuming the employee will be out soon if they contract COVID as well. This “Crystal Ball” has proven to be effective in helping alleviate staffing shortage issues.
- NW** The NW region continues to do a lot of neighbor helping neighbor with supplies when they are needed. Some facilities have had extra supplies and let the other members know in the event of a future shortage that they could use them.
- SE** The SE HCC has agency updates at the beginning of their meetings for the membership’s full engagement. Afterwards, agency updates, news, presentations and speakers report to the HCC.
- SC** The Harvey County Health Department in South Central uses Google Sheets to assign tasks. Everyone can see exactly what is being done and by whom. It updates in real time and is very helpful with incoming and outgoing COVID

Please view available supplies in the HCC State-wide Cache on the HCC website

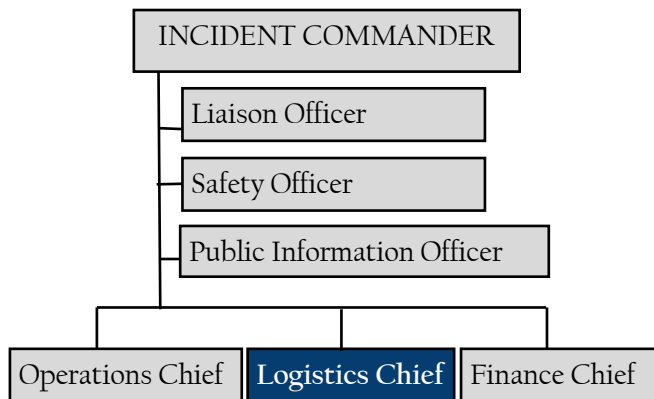
Statewide PPE Cache - [KANSAS HEALTHCARE COALITIONS \(ksbcc.com\)](https://ksbcc.com) and make any requests for available supplies you may need. As of March 15, 2022 all remaining supplies will be redistributed and pre-positioned to Post-Acute Care facilities within the 7 HCC Regions.

Logistics Section Chief

The Logistic Section Chief, a member of the General Staff, is responsible for providing facilities, services, and material in support of the incident. The Section Chief participates in the development and implementation of the Incident Action Plan and activates and supervises the Branches and Units within the Logistics Section.

Often Materials Management personnel hold the position of Logistics Chief in an actual incident. Those likely to hold the Logistics Section Chief position, should have the following tools ready to employ no matter who is in charge:

- Job Action Sheets
 - Print Activity Logs (ICS Form 214)
 - Location of and inventory of emergency resources on-hand.
- Printed contact information that is current as to vendors, utility resources, alternate sites of care and area partners.
- Templates drawn up ahead of time as to possible needs, estimated quantities and probable locations/equipment for various zones that could be utilized.



Free Testing Program

Upcoming 3/31 Deadline to Sign-Up for Battelle Free Routine Testing Program

As a reminder, KDHE-funded routine contract laboratory testing for COVID-19 is ending 3/31, and all Long-Term Care Facilities (LTCF) will need to have secured another routine testing provider for 4/1 and beyond. The Battelle Midwest Coordination Center is the only free surveillance and screening testing option for Kansas LTCF after 3/31.

Battelle Midwest Coordination Center provides free surveillance PCR testing from one to three times per week for organizations serving underserved populations, including congregate living facilities. Individual specimens collected at the facility are pooled together at the laboratory and reported out individually within 48-72 hours. Each LTCF onboarding to the Battelle Midwest Coordination Center’s free testing services should expect a 4+ week onboarding period, on average.

Given that time frame and 3/31 deadline, we encourage all facilities interested in Battelle’s free testing support to begin the registration process as soon as possible. Please visit:
<https://testedandprotected.org/#/> or contact slaughterm@testedandprotected.org with any questions or to start the onboarding process with Battelle.



HCC Workplan Items Due & Other Dates:

- 3/15/22 - The Membership List is to be updated twice a year - this would be a great time to get it updated.
- 3/15/22 - This is the last day for ordering personal protective equipment via the Statewide Cache. See page 3 of the *Check-Up* for details.
- 3/31/22 - This is the last day to sign-up for the free Battelle System for testing. See page 2 of the *Check-Up* for details.



Kansas City Metro HCC Membership Meeting 4/28/22 at 2:00 pm via TEAMS. Please register for this meeting on KS Train using course number 1092673.

NCK HCC Membership Meeting will not be held in March. Please watch for the information on the next meeting. NCK HCC uses KS Train course number 1092953.

NEKHCC Membership Meeting will be held 4/5/22 at 9:00 am via TEAMS. Please register for this meeting on KS Train using course number 1071554.

NW HCC Membership Meeting will be held Tuesday, 4/12/22 at 1:30 pm. Please register for this meeting on KS Train using course number 1084798.

SC HCC Membership Meeting will be held on April 20th via TEAMS. Please register for this meeting on KS Train using course number 1098828.

SEKS HCC Membership Meeting will be held 4/26/22 at 10:00 am. Use KS Train course number 1092952.

SHERT HCC Membership Meeting will be held on 3/11/22. Please register on KSTrain using course number, 1089096.



Heartland
Telehealth Resource Center

Heartland Telehealth Resource Center, www.heartlandtrc.org for their vast array of free resources including education, policies and regulations.

Survey Readiness Resource

Recently, the Northwest Region hosted Audrey Dunkel from the Kansas Hospital Association who presented, *Federal Vaccine Mandate Update* to assist hospitals in their understanding of federal mandates. CMS Surveyors will be checking for documentation and it is important that your organization be ready. If you have questions regarding the mandates and requirements, please contact:

- Catherine Walberg J.D. with Goodell, Stratton, Edmonds & Palmer:
cwalberg@gseplaw.com; 785-581-0530

SEK HCC Spotlight

Jon Reed, the Chief Operations Officer for Home Town Health Care, is being recognized this month. Says Coordinator Destany Wheeler about Jon, "He has a million things going on, and yet is always willing to participate in meetings and on the Executive Committee." Jon and his staff helped move a tremendous amount of PPE this summer which was greatly appreciated. Jon oversees eight Home Health Offices and two Hospice Care Offices. When fully staffed he manages 100 employees along with countless other duties. Thanks Jon for faithfully serving the SEK Healthcare Coalition!



Healthcare Coalition Partners of KS, LLC
412 W. 8th Street; Holton, KS 66436

Company E-mail: coalitionpartners@hccpkansas.com * Website: <https://www.kshcc.com>

This publication was supported by the Grant or Cooperative Agreement Number, NU90TP921936, funded by the Centers for Disease Control and Prevention. Its contents are solely the responsibility of the authors and do not necessarily represent the official views of the Centers for Disease Control and Prevention or the Department of Health and Human Services. Additions or corrections to the newsletter should be addressed to Beth (beth@hccpkansas.com).